



Product Category Overview Guide

Jobsite Power, Jobsite Lighting, Portable Power
& Pendant Power & Control



ericson.com



About Ericson Manufacturing

Founded in 1918 with over a century of innovation, experience and expertise has given Ericson the unique opportunity to offer the industry a comprehensive line of products, designed with exceptional worker safety in mind. Robust design and precision manufacturing set Ericson apart for quality products offering exceptionally long service life.

Ericson prides itself on building over 98% of it's products in the US and Canada, giving our customers a reliable and secure supply line.


Our custom engineered products are designed to meet critical customer requirements for their most challenging applications and exceed their expectations, for highly engineered quality built products.

Thank you for considering Ericson Manufacturing products.



ERICSON[®]
SAFETY IS OUR STANDARD



Go to [Ericson.com](https://www.ericson.com), and at the search bar  enter your part number for an Ericson cross or contact our applications team at **1-800-ERICSON. (374-4266)**

How it works *together.*

For over 100 years, Ericson has designed and engineered innovative products with a keen focus on worker safety. With decades of experience developing robust products for the most demanding applications, Ericson products deliver value through their exceptionally long service life and safety. Below is an illustration of how Ericson products All Work Together to deliver safe, reliable power and lighting to critical temporary applications.

① Jobsite Power PTU

Power Transformation Units convert 480V or 600V power, to lower voltages used for portable tools and lighting.

② Jobsite Power PDC/PDU

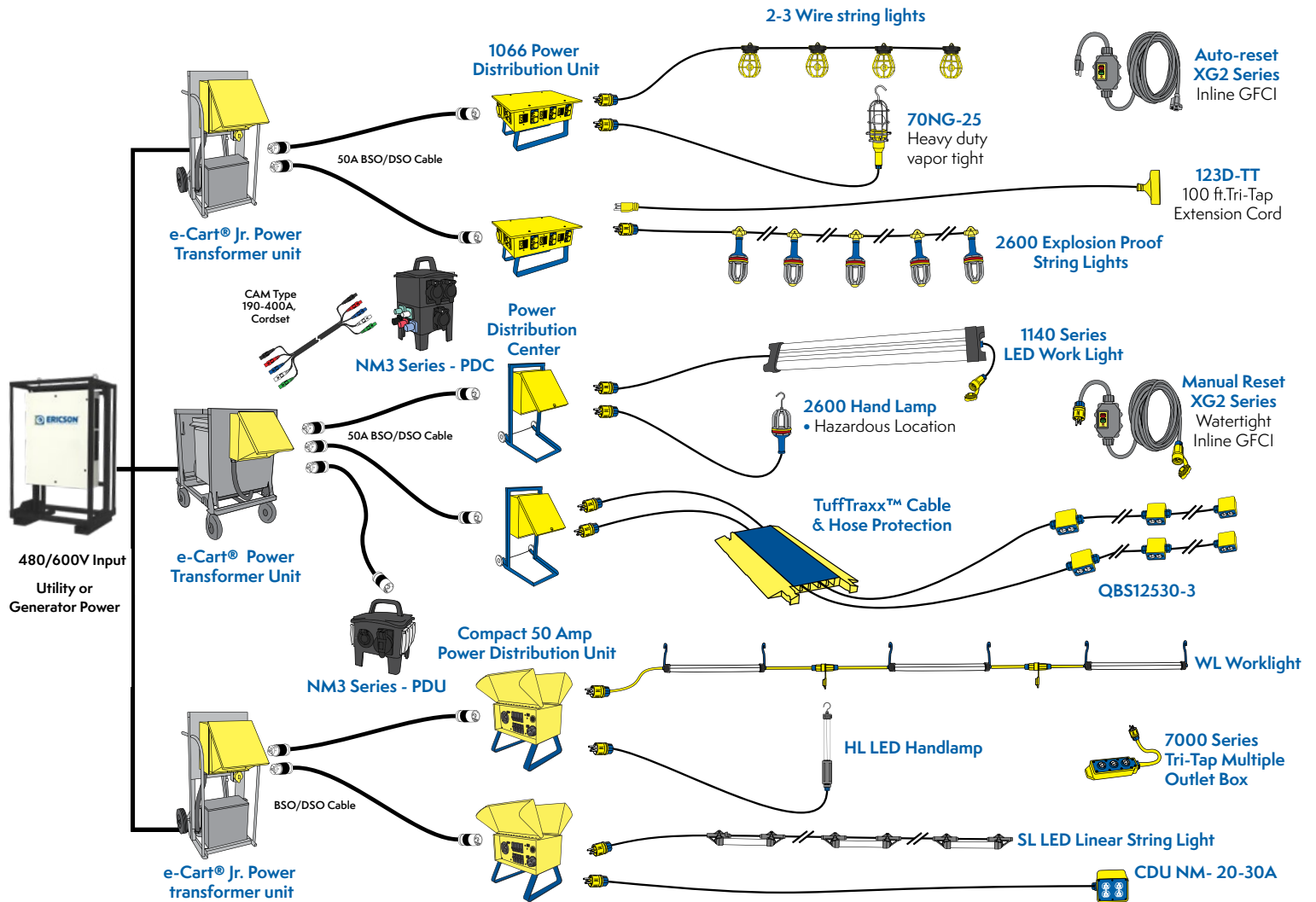
Power Distribution Unit provide local power with overload, open neutral protection and GFCI protection for 120, 240, or 208V receptacles.

③ Jobsite Lighting

Ericson provides a myriad of lighting solutions, from stringlights and baylights to handlamps and hazardous area fixtures.

④ Portable Power Cordsets

Factory assembled solutions provide safe, reliable NEC, and OSHA Code Compliant GFCI & AEGCP cordsets.



*Product not portrayed to scale



Portable Panel Boards - PPB

Portable Panelboard

400-1200-Amp Main Lug, 3-Phase, 480Y/277, 600Y/347, 208Y/120

- NEMA 3R construction
- White enclosure standard, other colors available
- 2 standard sizes
- Rear CAM-Type input panel
- Removable and replaceable side panels
- Receptacle options include CAM-Type, NEMA, IEC
- Forklift pockets for easy maneuvering
- ☞ Custom configurations available



PTU e-Cart™ - Open & Cage Frame Options - Aluminum & Steel

Power Transformation & Distribution Units

25kVA - 300kVA, 480-600V, Single & 3-Phase

- ☞ Select models cETLus listed
- ☞ UL943-5th Edition, Self-Testing GFCI
- ☞ UL1640 - Design Assembly
- ☞ NEMA 3R, 4X and Hazardous Location
 - 25-300kVA, single & 3-phase
- ☞ Dual Primary - 480/600V Primary Available
- ☞ 4 wheel transformer carts
- ☞ Customizable design, color & labeling



PTU e-Cart™ - Open & Cage Frame Options - Aluminum & Steel

Power Transformation Units

15kVA - 45kVA, 480-600V, Single & 3-Phase

- ☞ Select models cETLus listed
- ☞ UL943-5th Edition, Self-Testing GFCI
- ☞ UL1640 - Design Assembly
 - NEMA 3R, 4X and Hazardous Location
 - 15-45kVA, single & 3-phase
 - Dual Primary - 480/600V Primary Available
 - 2 & 4 wheel transformer carts
 - Customizable design, color & labeling





PTU e-Cart™ - Enclosed Frame Options - Aluminum & Steel

Power Transformation Units

45kVA - 75kVA, 480-600V, Single & 3-Phase,

- Ⓜ Factory Certification available
- Ⓜ UL943-5th Edition, Self-Testing GFCI
 - 45-75kVA, 3-phase
 - Dual Primary - 480/600V Primary Available
- Ⓜ 4 wheel transformer carts and skids, fully enclosed
- Ⓜ Customizable design, color & labeling



T-Frame 2-Sided e-Cart™ Design

Power Transformation Units

75kVA - 112.5kVA, 480-600V, Single & 3-Phase,

- Ⓜ cCSAus factory certification available
 - NEMA 3R rated
- Ⓜ Heavy Duty Aluminum or optional Powder Coated steel frame
- Ⓜ Easy to move, narrow frame fits through a standard 36" doorway
- Ⓜ Removable 8", 1800lb cap swivel locking casters, and 2 high stacking capability
- Ⓜ Product customization are available



Design Your Own e-Cart™



1. Job name: _____

2. Date Quotation is Due: _____

3. Cart Quantity: _____

4. When will the cart(s) be needed On-Site: _____

5. Service Area Environment:

Outdoor Rated (NEMA 3R) Classified Area (C1 or C2, D2) Severe Service (NEMA 4/4X)

6. Cart Frame Style:

(Choose from styles illustrated below)

Two Wheel Frame Styles

1P1 1P2 1P3 1P4

Two Wheel Open Frame 19kVA - Aluminum Standard Two Wheel Open Frame 25-45kVA - Aluminum Standard Two Wheel Aluminum Cage Frame 15-45kVA - Steel Standard Two Wheel Cage Frame 15-45kVA - Steel Standard

Four Wheel Frame Styles

EC3-A EC3-B EC3-D EC3-D-ENC EC3-F

Four Wheel Open Frame 25-45kVA - Aluminum Standard Four Wheel Open Frame - Tall 45-75kVA - Aluminum Standard Four Wheel Steel Cage 25-75kVA - Aluminum Standard Enclosed Frame 25-75kVA - Steel Standard Control T-Frame 15-75kVA - Aluminum Standard



Scan or click the QR code below to view our literature on how you can design your own e-Cart



Jobsite Power



Dual Primary, High kVA Steel Cage Frame Stackable Design

75-500kVA, 480/600V, 208Y/120

- Dual Primary voltage input capability, 480/600-Volt
- 75 to 500 KVA
- CAM Type primary and secondary connections
- Primary and secondary main breakers

Frame Design:

- Rugged steel or aluminum cage frame design securely protects critical electrical components
- Lifting Eyes and Fork Tubes for easily jobsite repositioning

Primary Electrical Configurations:

- Available in 480, 600, and Dual Primary, Single or 3-Phase
- Available Primary Fused Disconnect or Primary Panel with Main Circuit Breaker Protection
- Various Primary Connection Means Available (Hard wire, IEC Pin & Sleeve, CAM Type Connections.)



Bi-Directional, Dual Primary Cage Frame, Stackable Design

45-300kVA, 480/600V, 208Y/120

- Unique ability to operate bi-directional, to step up or step down voltages
- 45 to 300kVA
- Camlock input and output connections
- Primary and secondary main breakers

Frame Design:

- Rugged steel cage Powder Coated frame design securely protects critical electrical components
- Lifting Eyes and Fork Tubes for easily jobsite repositioning
- Stackable frame design to reduce storage space



Hazardous Location Steel Cage Frame Stackable Design

45kVA, 3-Phase, 480-600V, 208Y/120

- Class 1, Div 2, Groups C and D Rated
- NEMA 3R rated
- Heavy Duty, Powder Coated steel frame
- NEMA 3R fused primary disconnect, sized per transformer
- Other NEMA configuration receptacles available
- cCSAus factory certification available
- Removable 8", 1800lb cap swivel locking casters, and 2 high stacking capability
- Product customization are available .





Power Distribution Center (PDC)

200-Amp Metallic, 208Y/120V, 240/120V, 480V or 600V

- ⊗ cETLus listed for U.S. and Canada
- ⊗ UL943 5th Edition GFCI Protected Outlets
- ⊗ NEMA 3R Enclosure
- ⊗ Optional 200A and 400A (main lug only)
- ⊗ Main circuit breaker up to 200A
- ⊗ Single and 3-phase options available
- ⊗ 208Y/120V, 240/120V, 480V or 600V
- ⊗ Combo load center with GFCI circuit protection
- ⊗ Primary Camlock and terminal lug options
- ⊗ 24 pole breaker spaces
- ⊗ Product customizations are available



Metallic PDC Series

Power Distribution Center

60-200-Amp, 120-600V, Single & 3 Phase

- ⊗ cETLus listed for U.S. and Canada
- ⊗ UL943-5th Edition, Self-Testing GFCI
- ⊗ UL1640 - Design & Assembly
- ⊗ Straight, Locking, IEC & CAM Configurations
- ⊗ Wall mounted, 60-Amp, 3-phase design
- ⊗ Stainless Steel Enclosure Option
- ⊗ Custom Paint & Labeling Options Available



Design Your Own PDC

Design Your Own PDC

Use the fillable spaces below to customize your own PDC by typing or writing into the fields. Once complete, please forward to your Ericson Channel & Applications Team at sales@ericson.com

- Job name: _____
- Date Quotation is Due: _____
- Cart Quantity: _____
- When will the cart[s] be needed On-Site: _____
- Service Area Environment:
 - Outdoor Rated (NEMA 3R) Classified Area (C1 or C2, D2) Severe Service (NEMA 4/4X)
- Cart Frame Style: _____
(Choose from options illustrated below.)

Two Wheel Frame Styles

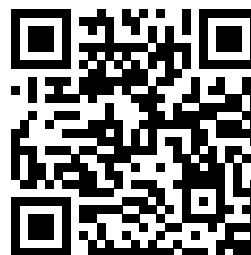
BE Frame

Two Wheel Open Frame
Aluminum Standard

M2 Frame

Two Wheel Open Frame
Aluminum Standard

Scan or click the QR code below to view our literature on how you can design your own e-Cart



Jobsite Power

ERICSON MANUFACTURING



NM3 Non-Metallic PDC Series

Compact Distribution Centers - Single & 3 Phase

20-300-Amp, 208Y/120 & 125/250V

- UL Listed, Canadian approvals pending
- UL943-5th Edition, Self-Testing GFCI
- UL1640 - Design & Assembly
- Straight, Locking, IEC & CAM Configurations
- Rugged, solid rubber enclosure
- Labeling Options Available



NM3 Series Nonmetallic PDU

Power Distribution Units

50-100-Amp, 208Y/120 & 125/250V

- UL Listed, Canadian approvals pending
- UL943-5th Edition, Self-Testing GFCI Receptacles
- UL1640 - Design and Assembly
- Straight, Locking, IEC & CAM Configurations
- Indoor & Weatherproof Outdoor Designs
- Rugged, solid rubber enclosure
- Stackable Designs



1066FS

Power Distribution Unit (PDU)

50-Amp, 208Y/120 & 125/250V

- cETLus listed for use in U.S. and Canada
- Ⓢ UL943-5th Edition Self-Testing GFCI Module with Nema 4 Test/Reset Buttons For Damp/Wet Areas
- UL1640 – Open Neutral Protection
- 30A, 240V GFCI Welding Receptacle as Standard Option
- Ⓢ 50A Feed-through
- Ⓢ L14-30 (30A 120V/240V) locking receptacle for additional 30A overload protected, downstream receptacle capacity *(on specified models only)*
- Ⓢ Custom Receptacle Options Available
- Powder Coated Paint Ensure Rugged Jobsite Performance
- Ⓢ Heavy Duty Legs in “sled” Fashion for Jobsite Repositioning
- Outdoor Units Provide Nema 3R Weather Resistance
- Field Serviceable by Qualified Personnel
- Ⓢ Renewable Parts List Included and Affixed Under Top Cover
- Ⓢ Customized Color and Labeling Available



1066FS



1066FS-WH



1066FS-BK



1066FS-3C

Compact Power Distribution Unit (PDU)
50-Amp, 208Y/120 & 125/250V

- cETLus listed for use in U.S. and Canada
- ⊗ UL943-5th Edition Self-Testing GFCI Module with Nema 4 Test/Reset Buttons For Damp/Wet Areas
- UL1640 – Open Neutral Protection
- 3-20A, GFCI and overload protected duplex receptacles
- 30A, 240V GFCI Welding Receptacle as Standard Option
- Heavy Duty Legs in “sled” Fashion for Jobsite Repositioning
- 50A Feed-through

1066FS-3C



CDU30, CDU50 & CDU50-WM

Compact Distribution Units (CDU)
30-50-Amp, 208Y/120 & 125/250V

- ⊗ cETLus listed for use in U.S. and Canada
- ⊗ Meets UL943-5th Edition GFCI Receptacles
- Patented UL1640 Open Neutral Protection
- ⊗ Available with USB & USB-C Charging
- Receptacles Combined with GFCI
- ⊗ NEMA 1 Indoor & 3R in-use - Outdoor Version
- ⊗ Wall mounted 3R in-use design
- ⊗ NEMA 1 - Indoor Version
- ⊗ Simplified handling, one hand carry
- ⊗ Reduced operational footprint
- ⊗ Less maintenance vs traditional 50A PDU's
- ⊗ Stackable Design
- ⊗ Product customization available

CDU50



CDU50-WM



CDU50-1



CDU30



Nonmetallic CDU-NM Series

Compact Distribution Units
20-30-Amp, 125/250V

- ⊗ UL943-5th Edition, Self-Testing GFCI Receptacles
- ⊗ Straight and Locking Configurations
- ⊗ Deluxe Wire Mesh Strain Relief Cord Protection
- ⊗ Indoor & Weatherproof Outdoor Designs
- ⊗ Designed to support portable generator output power



QBS (Quad Box Stringers)

Indoor & Outdoor, 20A, 4P/5W, 120/208, (L21-20)

- Industrial Grade, plugs, connectors and non metallic boxes
- Resists jobsite chemicals and oils
- Available in all-black design
- Convention center & entertainment applications
- Custom colors, receptacles & spacing available





Molded Cordsets

15 Amp, Straight Blade

- Construction grade, yellow cord jacket
- Illuminated plug, connector & 15 Amp Tri-Tap
- Standard 50 & 100ft lengths
- ☞ Available in USA made versions in black



Receptacle Assemblies & Cordsets

20-50 Amp Starter Receptacles & Cordsets

- Starter receptacle assemblies designed for quick installation
- ☞ Industrial grade, factory assembled, 20-50 Amp, locking receptacles with weatherproof cover
- ☞ Factory assembled 20-50 Amp Cordsets



IEC Pin & Sleeve Cordsets

20-100 Amp

- Premium grade cord, jacket and construction
- ☞ Industrial grade, factory assembled, 20-100 Amp, IP67 & IP44, IEC Pin & Sleeve cordsets
- Designed for rugged indoor & outdoor environments



CAM Type Cordsets

190-400 Amp

- Premium grade cord, jacket and construction
- ☞ Industrial grade, factory assembled, 190-400 Amp, CAM Type cordsets
- ☞ Designed for rugged indoor & outdoor environments





Factory Assembled Y, W & OEM Solutions 15-30 Amp Locking

- Premium grade cord, jacket and construction
- Industrial grade, factory assembled, 30-50A, locking cordsets
- Designed for rugged indoor, outdoor & OEM applications
- OEM Assembled Cordsets



Cordset Adapters 15-20 Amp

- Available in locking & straight blade configurations
- High visibility yellow
- Plated blades resist corrosion
- Durable Construction



Cordset Accessories Nonmetallic Hooks

- Available in three configurations
- Supports a range of cable diameters
- High strength, durable materials



Bulk Cord & Cordset Collapsible Containers

- 45" x 48" x 34 Solid Floor, fork lift capable
- Drop door side entry for easy access
- Floor collapsible for easy storage
- Top available for cord protection
- Dolly available for easy on-site relocation





XG2 - Series Watertight GFCI Inline Cordsets

- cETLus listed and NOM certified
- UL 943 5th Edition & CSA C22.2 No.144 self-testing GFCI
- NEMA 4X & 6P – Watertight and Temporary Submersion
- Manual and Auto-Reset Versions
- 14, 12 & 10ga. 15 & 20A 125V, 30A 250V
- Watertight XG2 15 & 20A, 125V Y & W
- Several Configurations – Tri-Tap, WP Box, Explosion Proof Plug & Connector



1060 & 1075 - Series Portable & Panel Mount Solutions

- cETLus listed and NOM certified
- UL 943 5th Edition & CSA C22.2 No.144 self-testing GFCI
- 15 & 20-Amp, 125V
- Outdoor and Splash Rated - Nema 4X Button on Face
- Available in Manual and Auto Reset
- Custom OEM Wiring Options Available



Smart Monitor Plugs & Connectors Indoor & Outdoor Configurations

- Meets OSHA & NEC Requirements for AEGCP
- 5 Electrical & Continuity Tests Automatically
- Green and Red Pilot Lights Signal Receptacle and Cord Status
- Available in Indoor and Watertight Configurations
- 15 & 20-Amp, 125V




TUFFTRAXX™ Cable & Hose Protection

- Meets OSHA & NEC Requirements
- Industry leading load ratings up to 50,000 lbs. per axle
- Industrial and Extreme duty options
- Constructed from lightweight polyurethane
- Custom base and cover colors available



Commercial Grade e-Lite™ Stringlight & Custom Stringer Series



- cULus listed
- Available in 14/2, 14/3 and 12/3 configurations
- String lights available in 50ft. and 100ft
- Designed for rapid set-up and tear down
- Supports LED lamp configurations
- Fully threaded screw shell ensures proper contact
- Assembled with molded NEMA Plug and connector
- Guards sold separately
- Product customizations are available



Industrial & MIL-SPEC Series Factory & Custom Assembled Stringlights

- UL and CSA Listing
- Ⓜ Standard & MIL-SPEC Sockets available
- Ⓜ Meets MIL-F-16377/39A for Naval Dressing Streamers
- Ⓜ Meets MIL-F-16377/39A for crushproof lamp socket
- Ⓜ Full threaded screwshell to ensure proper contact
- Ⓜ 3, 4, & 5 wire versions available for single & 3-Phase applications
- Ⓜ Designed for rapid set-up and teardown
- Ⓜ Stringlights standard with watertight plug & connector
- Ⓜ Guards sold separately*
- Ⓜ Cord, color, printing & fixture spacing and overall length options available



1006-LED Baylight 100 & 150 Watt Commercial Grade Bay Lighting

- cETLus listed to UL153, CSA C22.2 No. 250.4
- IP64 damp location, under roof rated
- Ⓜ Driver range 100-277VAC
- Stainless steel guard for impact protection
- 12,000 Lumens (100W), 18,000 Lumens (150W)
- Color temperature 5000K
- Ⓜ 15 ft., 16/3 SJTW primary, with 1 ft. secondary, NEMA 5-15
- Ⓜ Meets OSHA requirements CFR 1926.405(j)(1) for construction
- Recommended placement to achieve OSHA min 5fc: 40'x40' grid for 100W, 50'x50' for 150W



1006-ST Stand

1004-LED High Bay - 100 & 150 Watt Commercial Grade High-Bay Lighting

- cETLus listed to UL153, CSA C22.2 No. 250.4
- Ⓜ Product DLC listed
- 150-Watt, 100-277 VAC, 50/60 Hz
- 100-Watt is 17080 lumens, 150-Watt is 27000 lumens
- 5000K Color temperature
- Wet location rated, IP65
- Energy efficient LED technology





Ericson Temporary Power and Lighting Layout Support



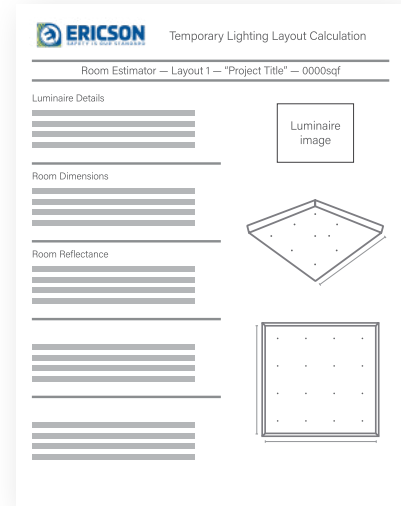
Ericson Exclusive Service

Critical to any safe Jobsite is the right amount of power and lighting in the right locations, for a safe and productive worksite.

Ericson offers lighting layout services that meet the OSHA required lumen output levels for various areas found on jobsites, to ensure productive installation and safe egress light levels.

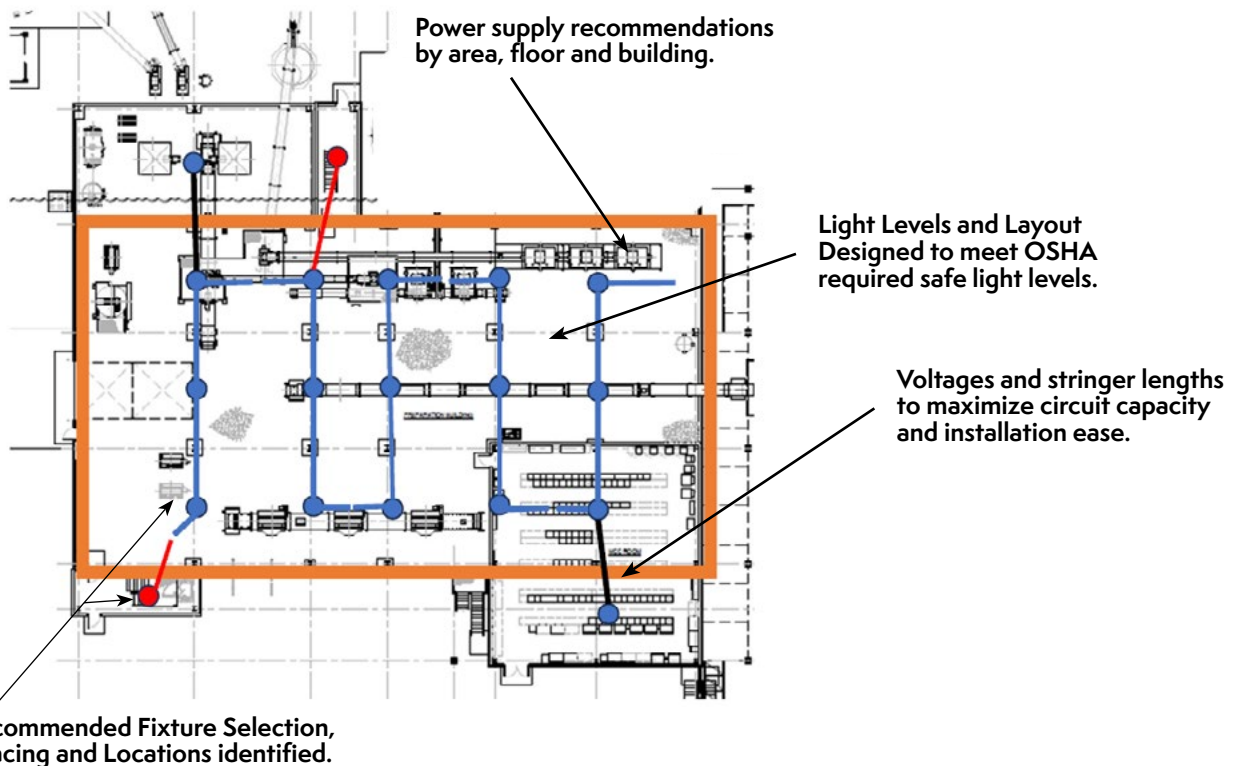
Based on your specific application and space requirements, our Product Applications Team will design a lighting and power system to meet code requirements for the tasks performed. The design process may include installation and power recommendations to reduce costs by maximizing circuit capacity and stringer lengths.

Reach out to your Ericson Representative or contact us at www.ericson.com to start the consultation process.



Representation only.

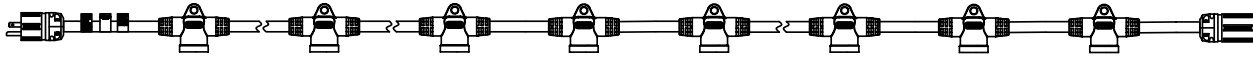
Lighting and Power Layout Example





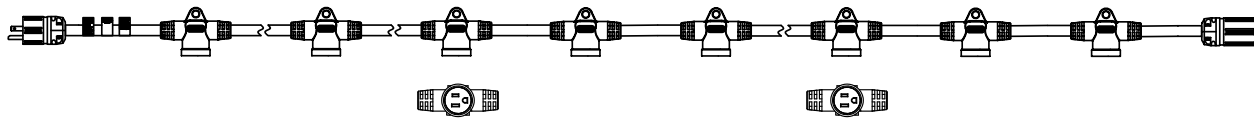
Ericson Exclusive

Lighting Stringer - e-Lite™



- 15-Amp, 120v, designed for Indoor & damp locations.
- Standard Configurations Available.
- Customized length, lamp socket, spacing and primary and secondary connectors.
- Single circuit designs
- Perfect indoor and damp locations where custom lamp spacing is needed.

Lighting & Receptable Stringer



- Designed for indoor applications.
- Standard Configurations Available.
- Customized length, lamp socket, receptacle count and spacing primary and secondary connectors.
- Single circuit designs.
- Perfect for applications where a mix of lighting and power is needed in indoor or damp locations.

Linear Lighting & Suspended Power



- Designed for indoor and outdoor applications
- Standard Configurations available.
- Custom applications to include linear light output, spacing, drop spacing, length, configurations and environmental considerations.
- Available in single, two and 3-phase circuits.
- Perfect for outdoor or assembly areas with mixed power and lighting needs.

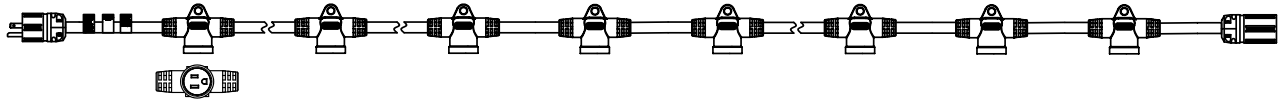
Jobsite Lighting



Receptacle Stringer

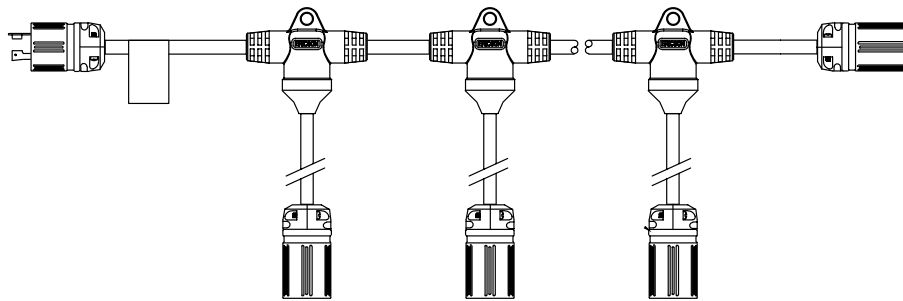


Ericson Exclusive



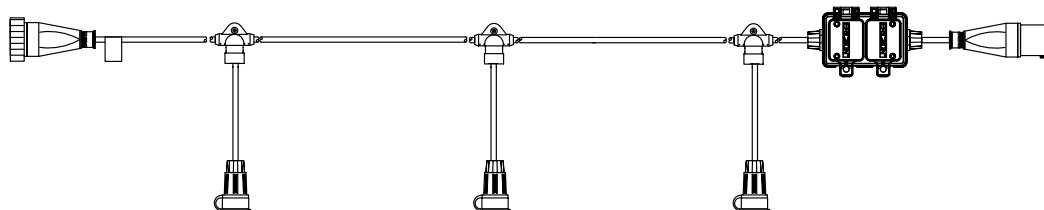
- Standard and custom configurations available.
- Designed to deliver power in standard or custom spacing.
- Molded or primary or secondary connections
- Perfect for indoor and damp locations for delivering power where needed.

Suspended Power



- 15-30-Amp Standard and custom configurations available.
- Designed to deliver power in standard or custom spacing.
- Available in single, two or 3-phase circuiting.
- Industrial primary or secondary connections
- Perfect for indoor, damp, and outdoor locations.
- Delivering single, two circuit and 3-phase power for lighting or where a mix of lighting and local power is needed.

Suspended Power & Lighting



- 15-30-Amp Standard and Custom Configurations
- Custom power drop and lighting spacing and connection configurations
- Single, two circuit and 3-phase configurations available
- Designed to combine Power and Lighting on separate circuits or phases for balanced power and lighting delivery



HL-LED Series

Industrial Grade Hand Lamps

- cETLus listed
- Suitable for outdoor use in wet locations
- Driver range of 100-277 volts at 50/60 Hz
- Beam angle available in 200° and 360°
- 4000K CCT
- High impact, shatter-proof tube with replaceable frosted or clear tube shield
- Provided with 15A, 125V, water-tight plug



7 & 9 - LED Series

Industrial Grade Hand Lamps

- cETLus listed for U.S. and Canada
- 120 and 12-Volt options
- Use with a variety of LED, CFL or Incandescent Lamps
- Molded flexible rubber handle impervious to impact and resistant to work site chemicals
- Assembled with industrial grade NEMA 5-15 Plug
- Accommodates cord sizes up to 14/3 SOW
- Product customizations available
- Wide selection of replacement parts and LED lamps



70N-LED Vapor Proof Series

Industrial Grade Hand Lamps

- cETLus listed for U.S. and Canada
- Molded handle impervious to impact and resistant to jobsite chemicals
- Heat and impact resistant globe threads into handle
- Guard constructed of heavy-gauge steel wire, finished with Zinc-Chromate plating to resist corrosion
- Quick latch wire guard for easy bulb changes
- Nut and grommet system provides both cord strain relief and protection from moisture/dirt
- Pre-wired models come with 16/3 SOW cord and a watertight molded plug
- Bulb included with hand lamp
- Product customizations available



1917, 1918 & 1924-LED Series

Industrial Grade Spot & Flood LED Handlamps

- Outdoor/Wet Location rated
- Designed for confined space applications
- Lightweight, Impact-Resistant Nylon Housing & Ergonomic Handle
- Impact-Resistant, High-Temperature Lens
- Large rubberized cushion lamp protector
- Heavy duty SOOW cord
- Rugged low voltage LED Technology
- High light quality, LED - 4000 CCT, 95 CRI
- Rubberized, sealed in-line transformer assembly converts 120V to 12VAC on 1917, 1918 series.



 Industry Leading, Ericson Exclusive

Jobsite Lighting



1140/1239 LED Series

Industrial Grade Linear LED- 2ft & 4ft

- ⊗ High efficient LED Array and Driver
- ⊗ 24" & 48" lengths, with 12,000 and 24,000 lumen outputs
- ⊗ Prismatic wrap-around lens for exceptional light distribution
- ⊗ Robust design with impact resistant materials
- ⊗ Fixture ends designed to prevent cable pinching
- ⊗ Available 90-minute battery back-up for emergency egress
- ⊗ 12-Volt DC version available for confined space, marine and vehicular applications
- ⊗ Made in USA



1000*, 1001 LED Series

Industrial Grade, Magnetic Mount, Canopy Fixture

- cULus listed (*1000 Series, Non Battery Backup*)
- Outdoor and wet location rated
- ⊗ 100-277V Driver
- 50,000-hour LED COB life
- 5000K color temperature
- Up to 6450 lumens
- ⊗ Efficient light distribution, Impact resistance prismatic lens
- ⊗ 90 Minute Emergency Battery Back-up Option
- Feed-through option for lighting large areas
- ⊗ 15-Amp Weatherproof Receptacle options on 1001
- Durable and rugged construction
- Integral, powerful mounting magnet
- Built-in replaceable handle (*1000 Series*)
- Made in the USA



WL LED Series

Industrial Grade Linear Work Lamps

- ⊗ cETLus approved for outdoor use/wet locations
- ⊗ High impact, shatter-proof tube with replaceable frosted tube shield
- ⊗ Driver range of 100-277 volts at 50/60 Hz
- ⊗ Beam angle available in 200° and 360°
- ⊗ 4000K CCT
- ⊗ Provided with 16/3 SOOW yellow cord
- ⊗ Provided with Industrial grade 15A, 125V, watertight plug
- ⊗ Available in 6, 11 & 22in length



BL500 Series

Industrial Grade Magnetic Mount Canopy

- ⊗ Designed to fit through Boiler Inspection opening – 1.8" diameter
- ⊗ Bright 120V, 500-Watt, 8800 Lumens Tungsten Lamp
- ⊗ Welded Steel Cage to Protect Lamp
- ⊗ NEMA 5-15 Industrial Grade Watertight Plug with 5' SOW Cord
- ⊗ Grounded Handle
- ⊗ Straight & Curved handle versions
- ⊗ Magnetic Mount for Stability
- ⊗ Replacement Parts Available





SL-LED Series

LED Linear Watertight Stringlight

- cETLus listed
- Universal Voltage Driver Rating - 100-277-Volt
- Nema 4X and, 6P and IP67 Ratings
- Low profile linear design
- 200° and 360° beam spread, 4000K
- Ambient Operating Temperature -20 - 40C
- FCC CFR 47 Part 15, subpart B Compliant
- Available in 50' or 100' overall lengths
- Packaged with replaceable clear outer tube wrap



SL HAZ - LED Series

LED Linear Hazardous Location Stringlight



- cLCus Listed
- IP66 and IP67 sealed design is fully dust-tight and withstands high pressure spray and temporary submersion
- 120VAC, 19.5 Watt, 1550 lumens
- 360° light output provides up-light and down-light for improved visibility
- Versatile mounting options to address a variety of requirements for temporary light stringers
- Replacement sub-assemblies are available for all parts of the system
- Capable of 300 ft continuous runs



2600-LED Series

LED Hazardous Location Handlamp & Stringlight

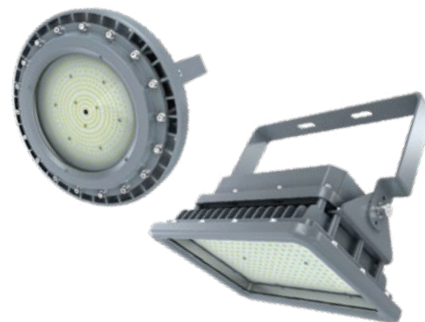
- cETLus listed
- Class I & II Div 1 & 2, Groups C, D, F & G
- NEMA 4X Rated, and Wet location rated
- 120 & 12-Volt options
 - Copper-free, cast aluminum, anti-spark guard.
 - High-impact tempered borosilicate glass globe
 - Heat, chemical and impact resistant, glass reinforced handle
 - Accommodates #16/3 to #14/3 in various types of cord jackets.
 - Hand lamps are available in 25, 50 and 100 ft. cord lengths
 - Stringlights are available in 65' and 100 ft. cord lengths
 - -20°C to 40°C Ambient



1007 & 1009-LED Series

LED Hazardous Location Baylight

- cETLus Listed
- IP66 Rated
- Universal Input Driver - 100-277V, 140lm/W
- Various Available Lumen Outputs
- Surface and pendant mounting
- Copper free aluminum enclosure
- High vibration resistance
- 5 year warranty
- Ambient temperature range: -40°C to 60°C



 **Industry Leading, Ericson Exclusive**

Jobsite Lighting



PERMA-SPEC

Industrial Grade, Dust & Moisture Resistant

- cULus Approvals
- Durable Nylon Husk and Plug Module
- Husk Grooves for secure non-slipping gloved grip
- Two-ScREW Internal Module design speeds assembly
- Floating Cord Clamp reduces cable jacket strain and resists cable pull-out
- Removable Cord Clamp insert allow a wide range of cable diameters.
- Cord clamp easily accommodates Wire-Mesh, I-Grip Design



PERMA-LINK

Industrial Grade, Dust & Moisture Resistant

- ⊗ UL & CSA Industrial Grade Straight & Locking Devices designed for applications where high impact, and worksite chemicals are present
- Ambient temperatures exceed other plastics, -40C° to 100C°
- ⊗ Internal Cord Seal prevents moisture, dust and contaminants from entering the wiring chamber, causing failure
- ⊗ "Floating" Cord Grip Design automatically adjusts to cord angles, preventing strain and pinching



PERMA-LINK

Hospital Grade, Dust & Moisture Resistant

- UL listed
- ⊗ 15 & 20-Amp, 125 volt configurations
- ⊗ Ambient temperatures exceed other plastics, -40C° to 100C°
- Built to withstand exceptional abuse
- ⊗ Internal Dust and Moisture Seal prevents migration of harmful dust and moisture
- Constructed of rugged PBT and TPE, polycarbonate
- ⊗ Cord clamp accommodates cord sizes #16/3 SJ through #12/3 SO
- ⊗ Gray rubber cover provides superior insulation
- ⊗ Clear cover permits visual inspection of wiring terminations without disassembly (PHC/CHC series)



PERMA-LINK

Perma-Link® 50 Amp Devices

- UL Listed, CSA Certified, cETLus Listed
- Rugged nylon construction resists high impact and jobsite oils & chemicals
- Nickel plated blades and stainless steel screws provide optimum corrosion resistance
- Optional Sealing boots with sealing ring offer additional moisture, dust protection and UV protection





PERMA GRIP™

Industrial Grade, Dust-Tight & Damp Location

- UL & CSA Industrial Grade Straight & Locking Devices
- ⊕ Designed for demanding indoor applications prone to high-impact, corrosion, oils, greases and worksite solvents and chemicals
- Operating temperature range from -40C° to 100C°
- ⊕ Cord Grip design prevents moisture, dust and contaminants from entering the wiring chamber, causing failure
- ⊕ 3-Screw Design assists in quick assembly



PERMA TITE®

Industrial Grade Watertight

- UL, CSA & NSF Approvals
- NEMA 4, 4X, 6, 6P and IP69K
- ⊕ Operating temperature range from -20C° to 65C°
- ⊕ Exclusive 8 Point Tongue & Groove Sealing System
- ⊕ External husk molded from PBT for high chemical, moisture resistance and petroleum absorption
- ⊕ Husk groves add a secure, non-slipping gloved grip
- ⊕ Device blades and contact are plated, extending service life
- ⊕ Perma-Tite Gray Series offers industry catalog numbers



Nonmetallic Cord Grips



PERMA TITE-GRAY



PERMA KLEEN

Industrial Grade Antimicrobial, Watertight

- UL, CSA & NSF Approvals
- NEMA 4, 4X, 6, 6P and IP69K
- Operating temperature range from -20C° to 65C°
- ⊕ Exclusive 8 Point Tongue & Groove Sealing System
- ⊕ External husk molded for higher crush & temperature and chemical resistance
- ⊕ Exclusive Antimicrobial additives offers over 99.98% protection for E.coli, Salmonella Staph, MRS and Listeria. Inhibits growth of, molds, mildews & fungi
- ⊕ Antimicrobial additive is effective for the life of the product
- ⊕ Device Housing Screws, Blades and Contact are Plated for better contact and service life



PERMA KLEEN Cord Grips



Pin & Sleeve

Industrial Grade, Splashproof (IP44), Watertight (IP67)

- ⊕ UL and CSA Approved IEC309-1 and 2 Pin & Sleeve Configurations
- ⊕ Designed for Harsh Industrial, Splashproof & Water-Tight, – NEMA 4, 4X, IP44, 65, 66, 67, & 68 applications
- High-Impact Thermoplastic Housing with Internal Strain Relief
- Operating temperature range from -25C° to 100C°
- Locking Ring Gasket to ensure water-tight seal
- Chamfered, Double Terminal Screws with Split Contact, Nickel plated steel springs on Connectors



⊕ Industry Leading, Ericson Exclusive

Portable Power



6000 & 6100 Series & Covers

Portable, Indoor & Outdoor Nonmetallic Boxes & Covers

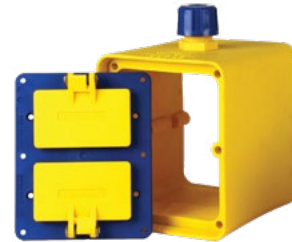
- Rugged TPE Exterior offering Crush and Chemical Resistance
- Single Gang, Double Sided, Standard and Deep Depths
- Indoor and Outdoor Cord Clamps with Feed-Thru
- Available with and without popular cover plates
- Available in Standard & Custom Colors & Assemblies



8000 Series & Covers

Portable, Indoor & Outdoor Nonmetallic Boxes & Covers

- Rugged TPE Exterior offering Crush and Chemical Resistance
- Double Gang, Double Sided in Deep Depth Standard
- Indoor and Outdoor Cord Nut with Feed-Thru
- Available with and without popular cover plates
- Available in Standard & Custom Colors & Assemblies



Factory Assembled Outlet Boxes

- 6000, 6100, 6200 & 8000 Series. PWDX & FS Series
- Customized Cable Type, Length Wire Mesh Support and Receptacle Options



PWDX - Watertight Duplex Receptacles

Portable, Watertight, Nonmetallic Boxes & Receptacles

- cULus approved for USA & Canada
- Watertight, Impact, Chemical and Corrosion Resistant
- Watertight Duplex Straight & Locking Receptacle Configurations
- PWDX Series are pre-wired for quick installation
- FS Box Dimensions with Standard & Deep Options



FS - Watertight Straight & Locking

Portable, Watertight, Nonmetallic Boxes & Receptacles

- UL Listed & CSA Certified
- Wet Location Approved, Space Saving Surface Mounting
- 15-20-Amp Straight Blade and 15-30-Amp Locking Male Inlet & Receptacle support Ericson Watertight Plugs
- Rugged Chemical and Corrosion Resistant Rubber
- FS, FD & Open style box options for feed-in and feed-through



Industry Leading, Ericson Exclusive

3100 - Series Commercial Grade Reels

- cULus Listed for indoor use
- Reinforced Steel & Plastic Construction
- Separate mounting base for easy installation (Flex Rig)
- 4-Roller Guide for positional pull, with adjustable ball-stop (Flex Rig)



4000 - 7000 - Series Industrial Cable Reels

- UL/CSA
- Weatherproof NEMA 4 Slipping rating
- Heavy Duty, All steel Construction
- Lift and Drag Application Approved
- Cord range – 16/3-12 conductor to 10/3-10/6
- 8-30A – 600V rated
- Power and Control Application Approved
- 4-Roller Guide for positional pull, with adjustable ball-stop



8000 - Series Hazardous Location Cable Reels

- ⊗ UL Approved Hazardous Location Reel
- ⊗ Lift and Drag Application Approved
- ⊗ Cord range – 16/3-14/4 – 35A - 600V
- ⊗ Power and Control Application Approved
- ⊗ 4-Roller Guide for positional pull, with adjustable ball-stop



9000-10000 - Series Industrial Grade, Motorized Cable Reels

- ⊗ All-steel modular construction with yellow powder coated finish
- ⊗ NEMA 4 sealed slip ring enclosure
- ⊗ 345° adjustable, 4-roller guides for direct or lateral pull-out and return to minimize cable stress
- ⊗ Lifetime lubricated spring motor canister with an exclusive quick change spring feature
- ⊗ External spring torque adjustment



SDR - Series Industrial Grade Static Discharge Reels

- 50-100' Cable (1/8" and 3/32" coated cable) Length with 100A Grounding Clamp
- .3-2.0 Ohm resistance
- Rugged All-Steel Construction with Epoxy Coated Enclosures
- Auto locking, for constant tension
- 4-Roller Guide with adjustable ball-stop (SDR-100)

 **Industry Leading, Ericson Exclusive**





Pulling Series

Wire Mesh

- Designed for a variety of cable & bundle diameters to 4"
- Complete Line of Junior, Short and Standard Lengths
- Cable/Bundle Range from .25" - 3.99"
- High Strength Single and Double Weave Galvanized Steel Strand



Supporting Series

Wire Mesh

- Available in Universal Bale, Double Eye, Offset and Single Eye Styles
- Closed, Rod and Split Lace Versions to 3.99"
- Conduit Riser, Single Weave Closed and Split Mesh and Rod Closing to 6" Conduit
- Bus Drop Safety Springs Available



Indoor & Deluxe Outdoor Series

Wire Mesh

- UL and cUL listed
- Stainless Steel Mesh (water-tight)
- Used with switch boxes, power drops, machines & tools
- Insulated and non-insulated versions - 3/8" through 3.25"
- Endless weave provides consistent cable tension
- Various Deluxe Mesh styles in straight & 90-degree
- Available in female thread



I-Grip Indoor Series

Wire Mesh

- I-Grips versions available in high strength Galvanized steel strand
- Attaches to external wiring device cord clamp screws
- Available in 3/8" through 1.25"





5500 - Series Crane Push Button Station

- Indoor Use Only, Type 4X high impact case
- 2-12 Button Configurations
- Factory assembled custom units available
- Replacable Case, Contacts, Legends, & Button Covers
- Operature Range 5° F to 160° F (-15° C to 70°C)
- Custom configurations and pre-wiring available



5502-PG Pistol Grip Series PG Compact Pistol Grip Styles

- Popular compact, 2-button single speed design
- Ergonomic pistol grip handle
- Indoor Use Only



5503-PG Pistol Grip Series PG Style with E-Stop

- Available with 1, 2, 3 speed with momentary and maintained E-Stop contacts
- Factory assembled units available
- Replacement Switches, Legends, and Button Covers
- Indoor use only



Replacement Parts

Contact an Ericson representative for replacement parts for pendant stations.



MINI-SYNC™ & MICRO-SYNC™ Series Connectors, Cable Assemblies and Receptacles

- AC & DC Configurations Available
- NEMA 6P and IP68
- Compatible with US and European Sensors
- Corrosion Resistant Gold-Plated Contacts
- Custom Configurations Available



Ericson Custom Cable Printing

Ericson offers cable printing options for a range of jacket styles and diameters.

Contact your Ericson representative for available printing and labeling options. - (16-8 Awg, SOOW).



Ericson Printing Capabilities



Ericson Custom Coloring Capabilities

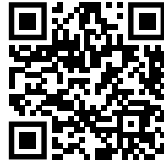
Contact your Ericson representative for custom color options.



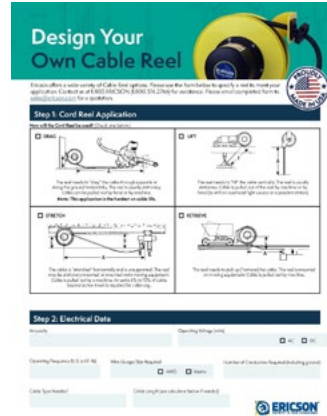
Design Your Own Product Configurators

Scan or click the QR code below to view our literature on how you can customize your own products.

Pendant Station Customization



Cable Reel Customization



Commercial Grade Stringlight Customization



Industrial & MIL-SPEC Stringlight Customization



Cordset Customization



GFCI Solution Customization



EXPERIENCE. **INNOVATION.** EXPERTISE.



ERICSON®
SAFETY IS OUR STANDARD



**Manufacturing Electrical Safety
Products for over 100 years.**

4323 Hamann Parkway
Willoughby, OH 44094
info@ericson.com
ericson.com
1-800-ERICSON (1-800-374-2766)
L1000894F