

PERMA-GRIP

Industrial Grade, Dust & Moisture Resistant




PERMA-GRIP™



Industry Leading Features:

- CSA Certified and UL Listed
- ☞ External TPE Molded Husk offers wider temperature range, higher crush and chemical resistance
- ☞ Husk Grooves for secure non-slipping gloved grip
- ☞ Cord Grip Dust and Moisture Seal prevents harmful dust and moisture intrusion
- ☞ Nickel Plated Device Blades and Contacts offer superior corrosion resistance and service life
- ☞ Cord Grip Nut and Grommet System offer a wide range of cable sizes

 **Industry Leading, Ericson Exclusive**



Locking Configurations:



15-AMP Locking
1520-PG, 1620-CG

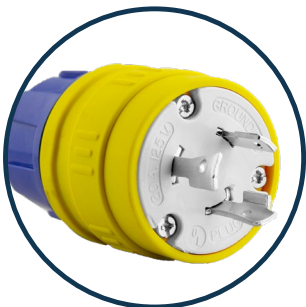


20-AMP Locking
2310-PG, 2410-CG

Additional Features:

All Available in Black
*Custom Colors Available

Unique Features:



High temperature range, external rubber husk provides superior crush & chemical resistance



Patented Cord Grip Nut & Grommet System provides a range of cord diameter solutions



Nickel Plated Device Blades and Contacts offer superior corrosion resistance and service life



Watertight Cord Grip Resists Moisture & Dust for Quick Assembly

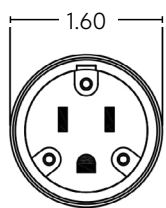
NEMA Configuration Chart:

	Face View	NEMA Configuration	Amperage	Voltage	Perma-Grip Plug	Perma-Grip Connector
2-Pole / 3-Wire		NEMA 5-15	15A	125V	1510-PG	1610-CG
		NEMA 5-20	20A	125V	1512-PG	1612-CG
		NEMA L5-15	15A	125V	1520-PG	1620-CG
		NEMA L5-20	20A	125V	2310-PG	2410-CG
		NEMA L5-30	30A	125V	2510-PG	2610-CG
		NEMA 6-15	15A	250V	1514-PG	1614-CG
		NEMA 6-20	20A	250V	1516-PG	1616-CG
		NEMA L6-15	15A	250V	1522-PG	1622-CG
		NEMA L6-20	20A	250V	2312-PG	2412-CG
		NEMA L6-30	30A	250V	2512-PG	2612-CG
		NEMA L7-15	15A	277V	1524-PG	1624-CG
3-pole 3-wire		Non-NEMA ¹	20A	125 / 250V	2316-PG	2416-CG
		Non-NEMA ¹	15 / 10A	125 / 250V	1507-PG	1607-CG
		Non-NEMA ¹	30A	125 / 250V	2516-PG	2616-CG

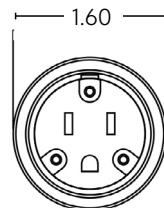
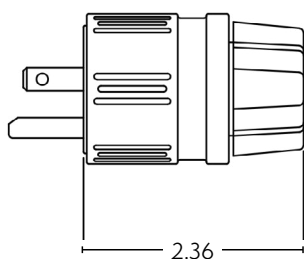
¹All non-NEMA configurations are non-grounding

Product Dimensions:

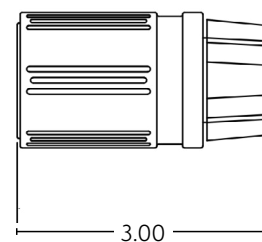
15 / 20-Amp Straight Blade, 15-Amp Locking



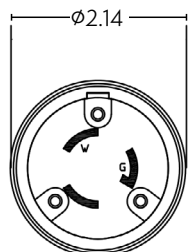
Typical Face



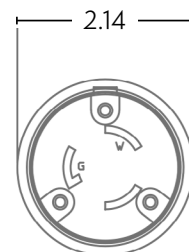
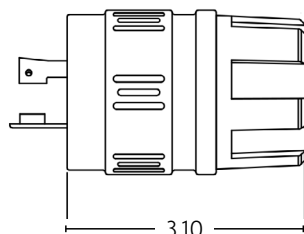
Typical Face



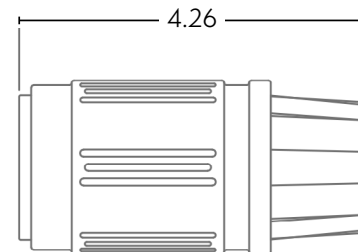
20-Amp Locking



Typical Face



Typical Face



Ericson Watertight Grommet Guide

		B10200XX						B10220XX										
		Small White OVAL #24	Small Orange OVAL #25	Small Yellow #21	Small White #20	Small Red #16	Small Blue #18	Large White #91	Large Yellow #90	Large Black #89	Large Blue #88	Large Gray #87	Large Red #86	Large Orange #85				
MAX CORD DIA. (inch)	→	.160 (UF) OVAL	.230 x .440 OVAL (UF)	.370	.450	.560	.610	.450	.560	.630	.690	.750	.830	.900	WIRE			
		.160 x .360	.230 x .440													3	4	
Plug	Connector			Yellow	White*	Red	Blue	White*	Yellow	Black	Blue	Gray	Red	Orange				
1510	1610	✓ Optional**	✓ Optional**	✓	✓	✓	✓								X			
1512	1612			✓	✓	✓	✓										X	
1514	1614			✓	✓	✓	✓										X	
1516	1616			✓	✓	✓	✓										X	
1520	1620			✓	✓	✓	✓										X	
1522	1622			✓	✓	✓	✓										X	
1524	1624			✓	✓	✓	✓										X	
2310	2410							✓	✓	✓	✓				X			
2312	2412							✓	✓	✓	✓				X			
2314	2414							✓	✓	✓	✓				X			
2316	2416							✓	✓	✓	✓				X			
2317	2417							✓	✓	✓	✓				X			
2320	2420								✓	✓	✓	✓				X		
2322	2422								✓	✓	✓	✓				X		
2324	2424								✓	✓	✓	✓				X		
2510	2610							✓	✓	✓	✓				X			
2512	2612							✓	✓	✓	✓				X			
2514	2614							✓	✓	✓	✓				X			
2516	2616							✓	✓	✓	✓				X			

Note:
 *May also appear as light tan
 **May be ordered separately - Call Ericson for details

✓ = included in package



Related Products:

Click on an image or scan the QR code for more product information.

Learn More



[Perma-Spec
E515P, E515C](#)



[Perma-Link
1510-P, 1610-C](#)



[Hospital Grade
1530 PH, 1630 CH](#)



[SmartMonitor
AEGCP Compliant
1510-PML/GML, 1610-CML/GML](#)



[SmartMonitor
AEGCP Compliant
1510-PW6PL, 1610-CW6PL](#)



[Perma-Tite
IP69k Water Tight
1510-PW6P, 1610-CW6P](#)



[Perma-Kleen Antimicrobial
IP69k Water Tight
1510-PW6P-AM, 1610-CW6P-AM](#)



[Perma-Link 50A
CS 6365-P, CS 6364-C](#)

Factory & Custom Assembled Cordsets:



[Perma-Link Cordset](#)



[Perma-Tite Cordset](#)



[Perma-Kleen Cordset](#)



[SmartMonitor Cordset](#)



Ericson Manufacturing Company
4323 Hamann Parkway
Willoughby, OH 44094, USA



1-800-ERICSON
info@ericson.com
L1000877C

ericson.com