

PERMA-LINK

Industrial Grade, Dust & Water Resistant



ERICSON
SAFETY IS OUR STANDARD



PERMA-LINK®



Industry Leading Features:

- UL & CSA Approvals
- ⊗ External TPE Molded Husk offers ambient temperatures that exceed other plastics, -40C° to 100C°
- Husk Grooves for secure non-slipping gloved grip
- ⊗ Internal Dust and Moisture Seal prevents migration of harmful dust and moisture intrusion
- ⊗ Device Blades and Contact are Plated for better contact and service life
- ⊗ Floating Cord Clamp reduces cable jacket strain and resists cable pull-out
- Removable Cord Clamp insert allow a wide range of cable diameters
- ⊗ Interchangeable Plug & Connector Husks offer exceptional blade protection & seal (Models 1510-P/1610-C, 1512-P/1612-C & 1514-P/1614-C)

⊗ Industry Leading, Ericson Exclusive



Locking Configurations:



15-AMP Locking
1520-P, 1620-C



20-AMP Locking
2310-P, 2410-C

Additional Features:

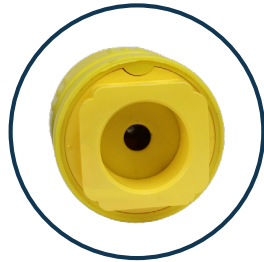
All Available in Black

*Custom Colors Available

Unique Features:



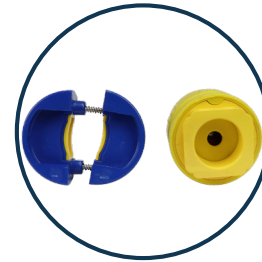
External Rubber Husk
Higher Temperature.
Superior crush,
chemical resistance



Internal Dust &
Moisture Seal



Plated Device &
Contact Blades



Floating Cord Clamp
with Removable
Cable Insert



Interchangeable Plug
& Connector Husk
for Exceptional Blade
Protection & Seal

NEMA Configuration Cross Reference:

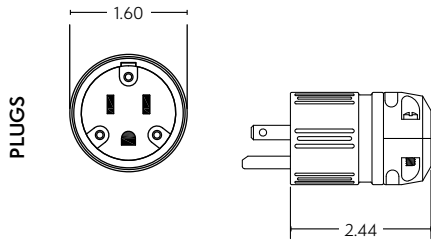
Competitors Listed: Hubbell, Leviton and Legrand

	Face View	NEMA Configuration	Amperage	Voltage	Perma-Link Plug	Competitor H & L	Competitor W	Perma-Link Connector	Competitor H & L	Competitor W
2-Pole / 3-Wire		NEMA 5-15	15A	125V	1510-P*	5266-C	1447	1610-C*	5269-C	1547
		NEMA 5-20	20A	125V	1512-P*	5366-C	1433	1612-C*	5369-C	1533
		NEMA L5-15	15A	125V	1520-P	4720-C	2447	1620-C	4729-C	2547
		NEMA L5-20	20A	125V	2310-P*	2311	2647	2410-C*	2313	2747
		NEMA L5-30	30A	125V	2510-P	2611	2847	2610-C	2613	2947
		NEMA 6-15	15A	250V	1514-P	5666-C	1449	1614-C	5669-C	1549
		NEMA 6-20	20A	250V	1516-P	5466-C	1448	1616-C	5469-C	1548
		NEMA L6-15	15A	250V	1522-P	4570-C	2449	1622-C	4579-C	2549
		NEMA L6-20	20A	250V	2312-P*	2321	2648	2412-C*	2323	2748
		NEMA L6-30	30A	250V	2512-P	2621	2848	2612-C	2623	2948
		NEMA L7-15	15A	277V	1524-P	4770-C	2434	1624-C	4779-C	2534
		NEMA L7-20	20A	277V	2314-P	2331	2649	2414-C	2313	2749
		NEMA L7-30	30A	277V	2514-P	2631	2849	2614-C	2633	2949
3-pole 3-wire		Non-NEMA ¹	20A	125 / 250V	2316-P	7567CY	2608	2416-C	7565CY	2708
		Non-NEMA ¹	20/10A	250 / 600V	2317-P	-	2708	2417-C	-	2808
		Non-NEMA ¹	15/10A	125 / 250V	1507-P	7567C	2407	1607-C	7565C	2507
3-pole / 4-wire		NEMA L14-20	20A	125 / 250V	2320-P	2411	2674	2420-C	2413	2774
		NEMA L14-30	30A	125 / 250V	2520-P	2711	2874	2620-C	2713	2974
		NEMA L15-20	20A	250V / 3-phase	2322-P	2421	2675	2422-C	2423	2775
		NEMA L15-30	30A	250V / 3-phase	2522-P	2721	2875	2622-C	2723	2975
		NEMA L16-20	20A	480V / 3-phase	2324-P	2431	2676	2424-C	2433	2776
		NEMA L16-30	30A	480V / 3-phase	2524-P	2731	2876	2624-C	2733	2976
		NEMA L17-30	30A	600V / 3-phase	2526-P	2741	2877	2626-C	2743	2977
		Non-NEMA ¹	20A	120 / 208V	2326-P	-	-	2426-C	-	-
3-pole 3-wire		Non-NEMA ¹	30A	125 / 250V	2516-P	3331	2808	2616-C	3333	2908
		Non-NEMA ¹	20A/10A	250 / 600V	2317-P	-	-	2417-C	-	-
4-pole 4-wire		NEMA L18-30	30A	120 / 208V 3-phase wye	2530-P	2751	2609	2630-C	2753	2709
		Non-NEMA ¹	30A	120 / 208V 3-phase wye	2528-P	3431-C	2809	2628-C	3433-C	2909
4-pole 5-wire		NEMA L21-20	20A	120 / 208V 3-phase wye	2328-P	2511	2681	2428-C	2513	2781

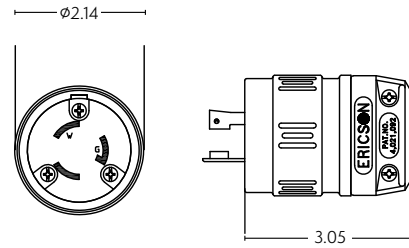
¹All non-NEMA configurations are non-grounding

Product Dimensions:

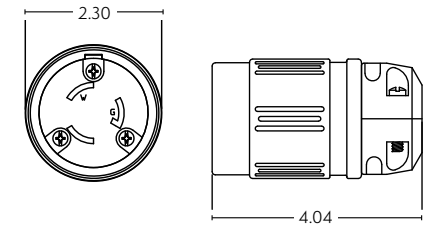
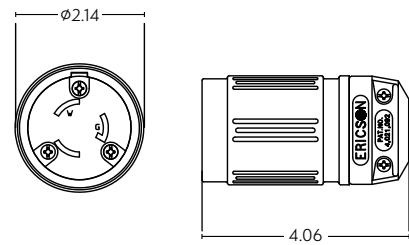
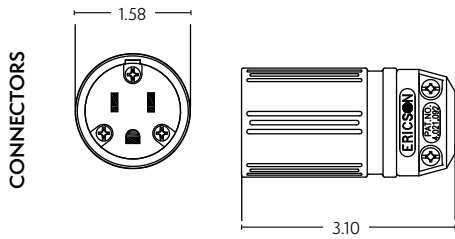
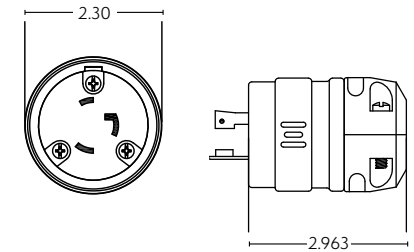
15/20-Amp Straight, 15-Amp Locking



20-Amp Locking



30-Amp Locking



Related Products:

Click on an image for more product information.



Perma-Spec
E515P, E515C



Perma-Grip
1510-PG, 1610-CG



Hospital Grade
1530 PH, 1630 CH



SmartMonitor
AEGCP Compliant
1510-PML/GML, 1610-CML/GML



SmartMonitor
AEGCP Compliant
1510-PW6PL, 1610-CW6PL



Perma-Tite
IP69k Water Tight
1510-PW6P, 1610-CW6P



Perma-Kleen Antimicrobial
IP69k Water Tight
1510 PW6P-AM, 1610 CW6P-AM



Perma-Link 50A
CS 6365-P, CS 6364-C



Ericson Manufacturing Company
4323 Hamann Parkway
Willoughby, OH 44094, USA



1-800-ERICSON
info@ericson.com
L1000879D
10.30.24